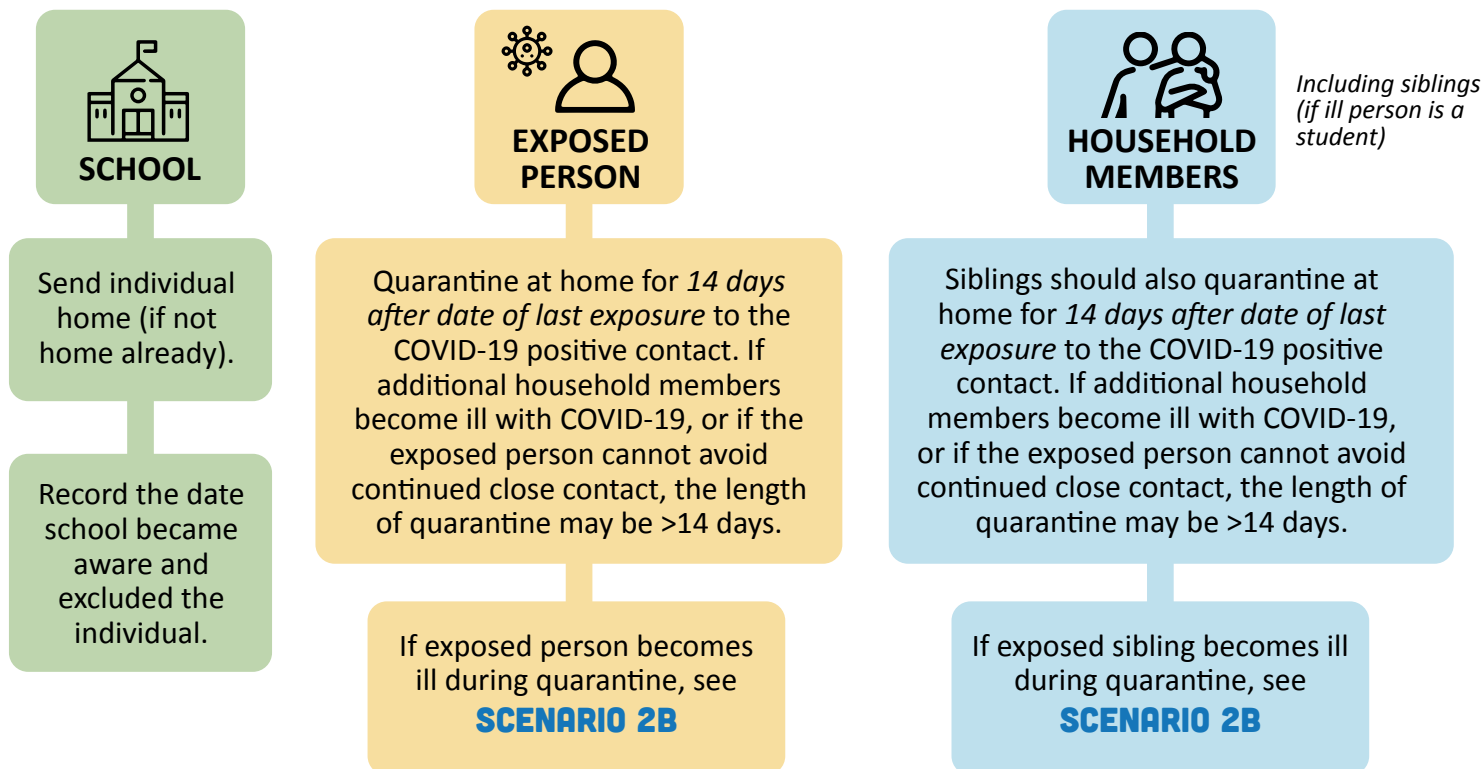


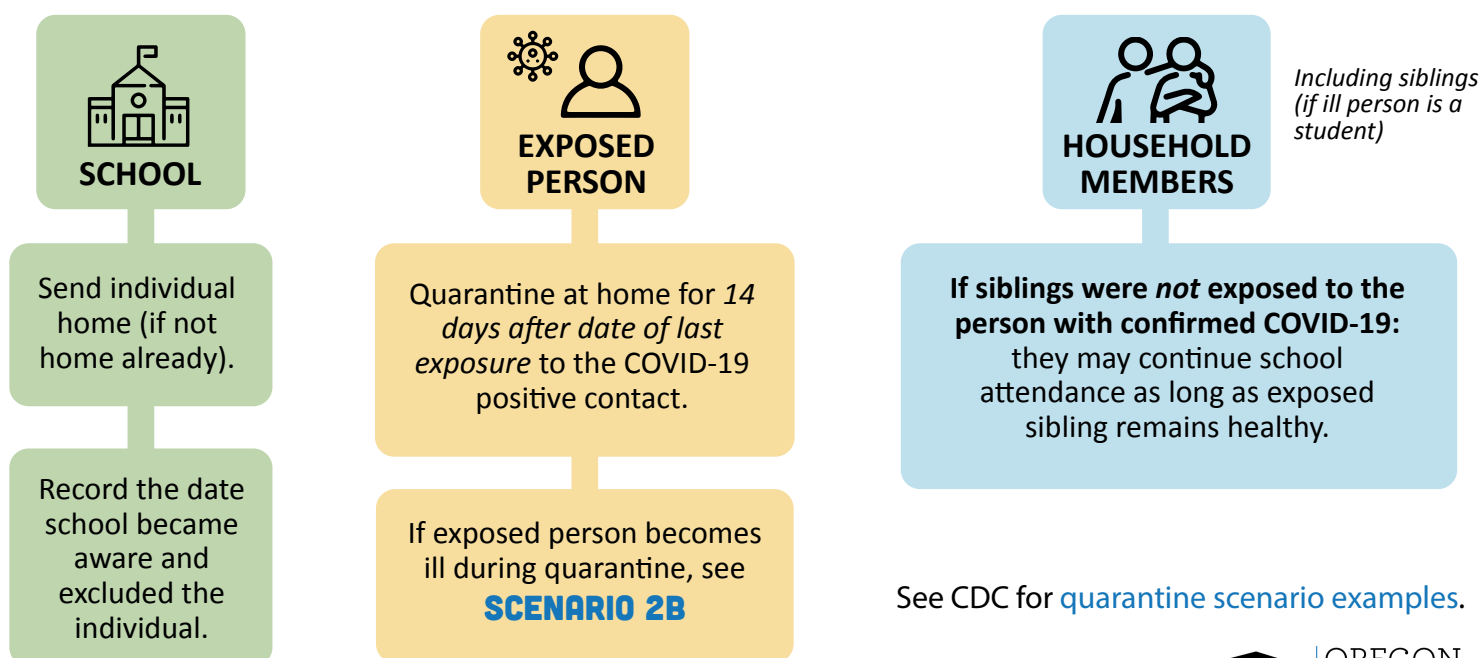
# 1. SCHOOL SCENARIOS

## HOW TO HANDLE EXPOSURE TO COVID-19

### SCENARIO 1A. A HEALTHY STUDENT OR STAFF MEMBER HAS BEEN EXPOSED TO A PERSON WITH CONFIRMED COVID-19 WITHIN THEIR HOUSEHOLD



### SCENARIO 1B. A HEALTHY STUDENT OR STAFF MEMBER HAS BEEN EXPOSED TO A PERSON WITH CONFIRMED COVID-19 OUTSIDE OF THEIR HOUSEHOLD

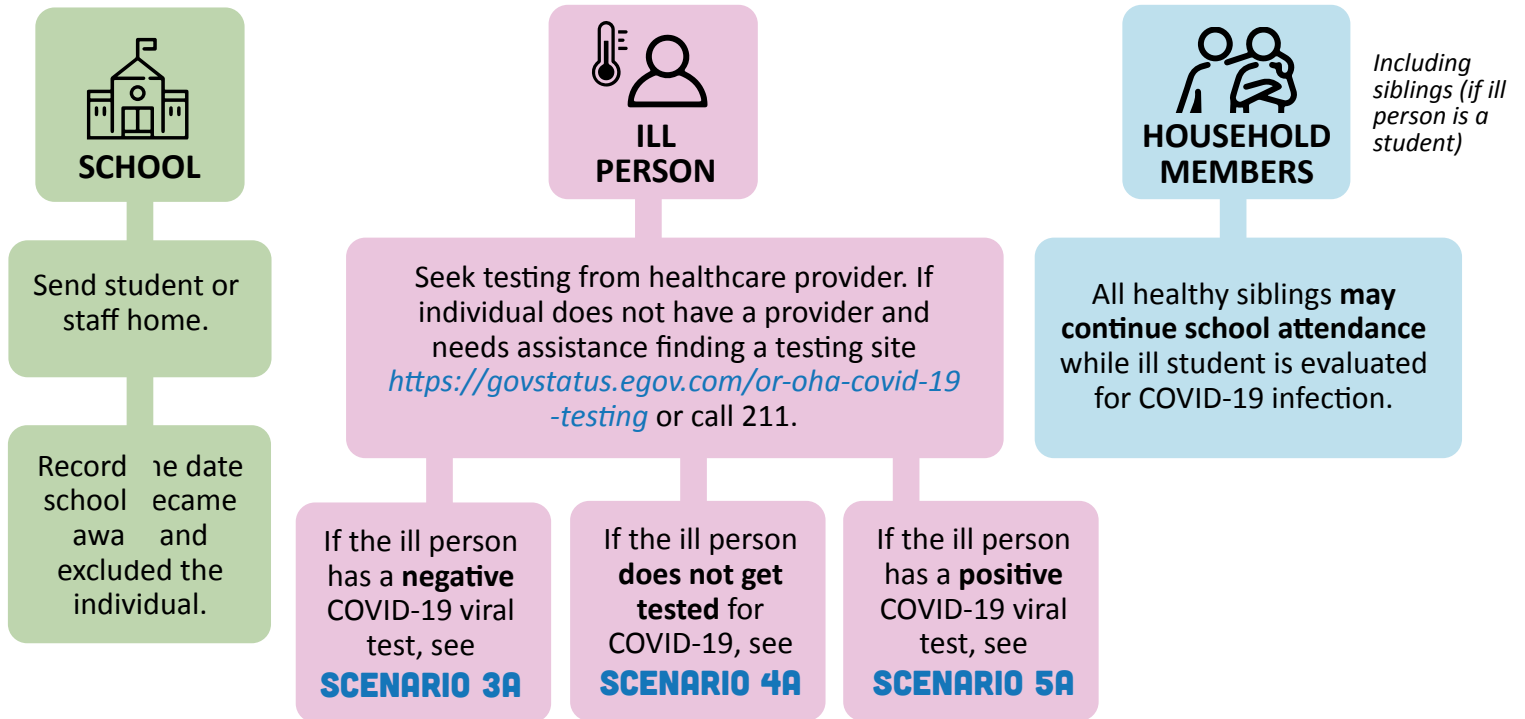


See CDC for [quarantine scenario examples](#).

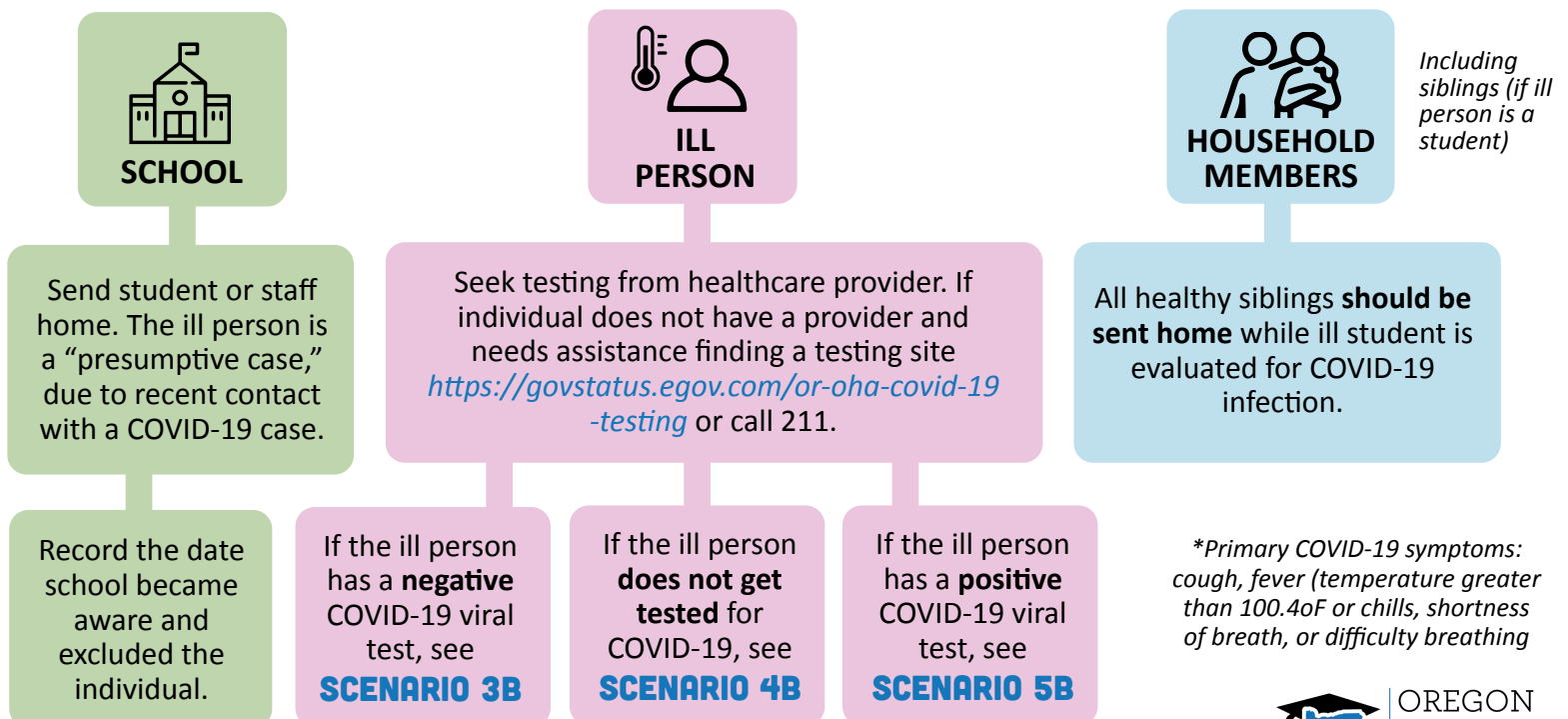
## 2. SCHOOL SCENARIOS

### HOW TO HANDLE COVID-19 ILLNESS

#### SCENARIO 2A. A STUDENT OR STAFF MEMBER BECOMES ILL WITH COVID-19 SYMPTOMS\*. ILL PERSON HAS NO KNOWN COVID-19 CONTACTS IN PAST 14 DAYS.



#### SCENARIO 2B. A STUDENT OR STAFF MEMBER BECOMES ILL WITH COVID-19 SYMPTOMS\*. ILL PERSON WAS IN CLOSE CONTACT WITH SOMEONE WITH HAS COVID-19 IN PAST 14 DAYS.

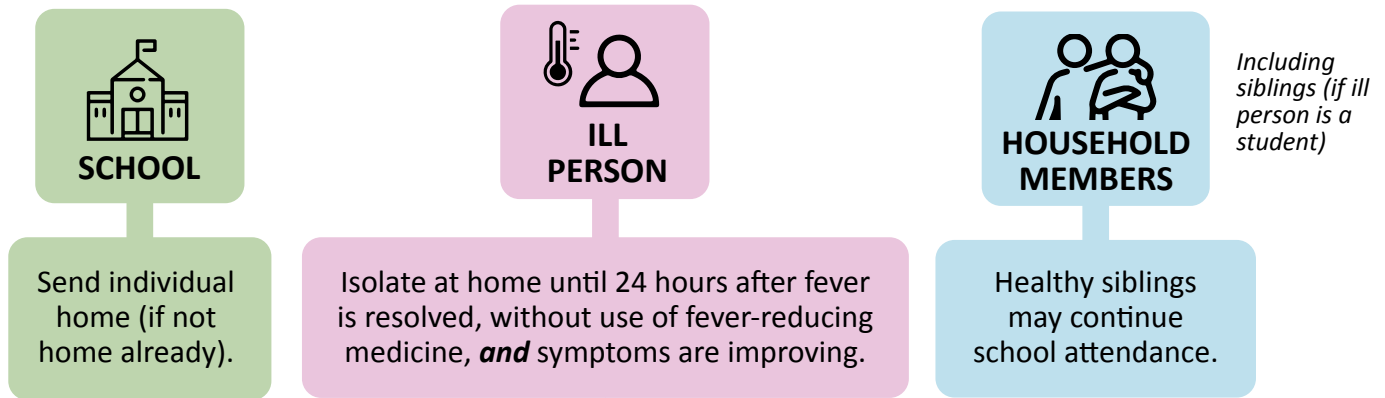


\*Primary COVID-19 symptoms: cough, fever (temperature greater than 100.4oF or chills, shortness of breath, or difficulty breathing)

# 3A. SCHOOL SCENARIOS

## HOW TO HANDLE A NEGATIVE COVID-19 VIRAL TEST

**SCENARIO 3A. AN ILL STUDENT OR STAFF MEMBER HAS A **NEGATIVE** COVID-19 VIRAL TEST. ILL PERSON HAS **NO KNOWN COVID-19 CONTACTS** IN PAST 14 DAYS.**



# 3B. SCHOOL SCENARIOS

## HOW TO HANDLE A POSITIVE COVID-19 VIRAL TEST

**SCENARIO 3B. AN ILL STUDENT OR STAFF MEMBER HAS A **NEGATIVE** COVID-19 VIRAL TEST. ILL PERSON WAS IN CLOSE CONTACT WITH SOMEONE WITH HAS COVID-19 IN PAST 14 DAYS.**



Send student/staff home, if not already isolated. The ill person is a “presumptive case,” due to recent contact with a COVID-19 case.

School nurse or designated staff contact LPHA to confirm case and to begin collaboration on contact tracing.

After confirming “presumptive positive” case, use Common Communication protocol to notify class/cohort/staff that LPHA is aware of COVID-19 case, and will assist in determining and notifying exposed individuals.

Document on cohort logs when 6 feet physical distancing was not maintained during school day.

Provide cohort logs to LPHA, to assist with identifying exposed individuals.

If LPHA determines an entire cohort requires quarantine, follow Common Communication protocol.



*Local  
Public  
Health  
Authority*

Confirm that “presumptive case” was exposed to a confirmed case.

Work with school to review cohort logs to identify exposed individuals.

Review if 6 feet physical distancing was consistently maintained during school day. Identify exposed contacts.

If cannot confirm that 6 feet distancing was consistently maintained during school day, recommend to cohort quarantine.

Notify exposed contacts to initiate quarantine period.



Even though the COVID-19 test was negative, the ill person is considered a “presumptive case” because of recent close contact and the negative test may be a false negative viral test.

Ill person should isolate at home for 10 days since symptoms first appeared, **and** until 24 hours after fever is resolved, without use of fever-reducing medicine, **and** other symptoms are improving.



Refer to **SCENARIO 1**

If student rides school district transportation (not public transit) for transportation **and** bus ride is >15 minutes, all students on bus should be considered an exposed cohort.

*Including siblings  
(if ill person is a student)*

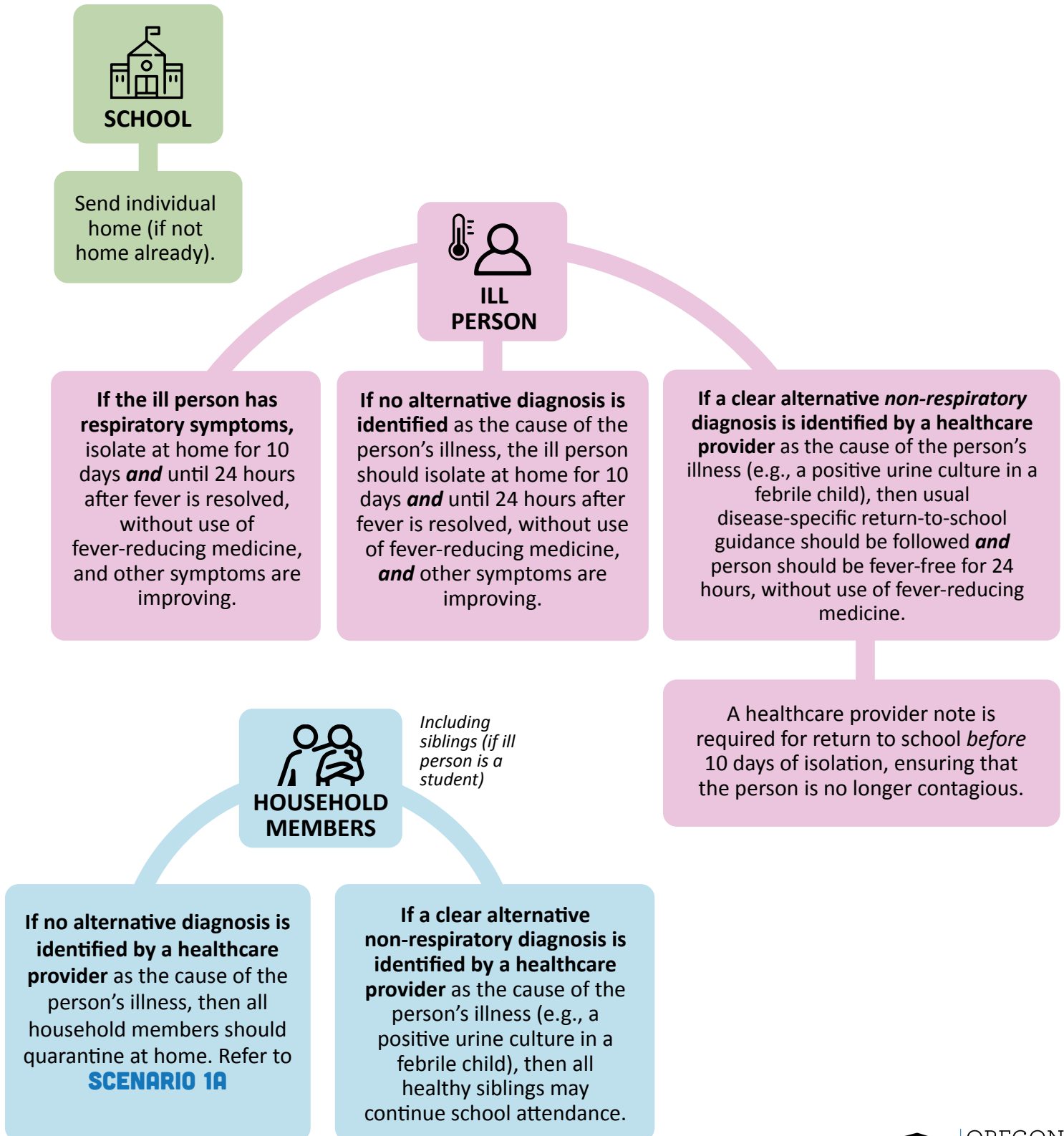


All healthy siblings must quarantine at home. Refer to **SCENARIO 1A**

# 4A. SCHOOL SCENARIOS

## HOW TO HANDLE WHEN A PERSON DOES NOT GET TESTED

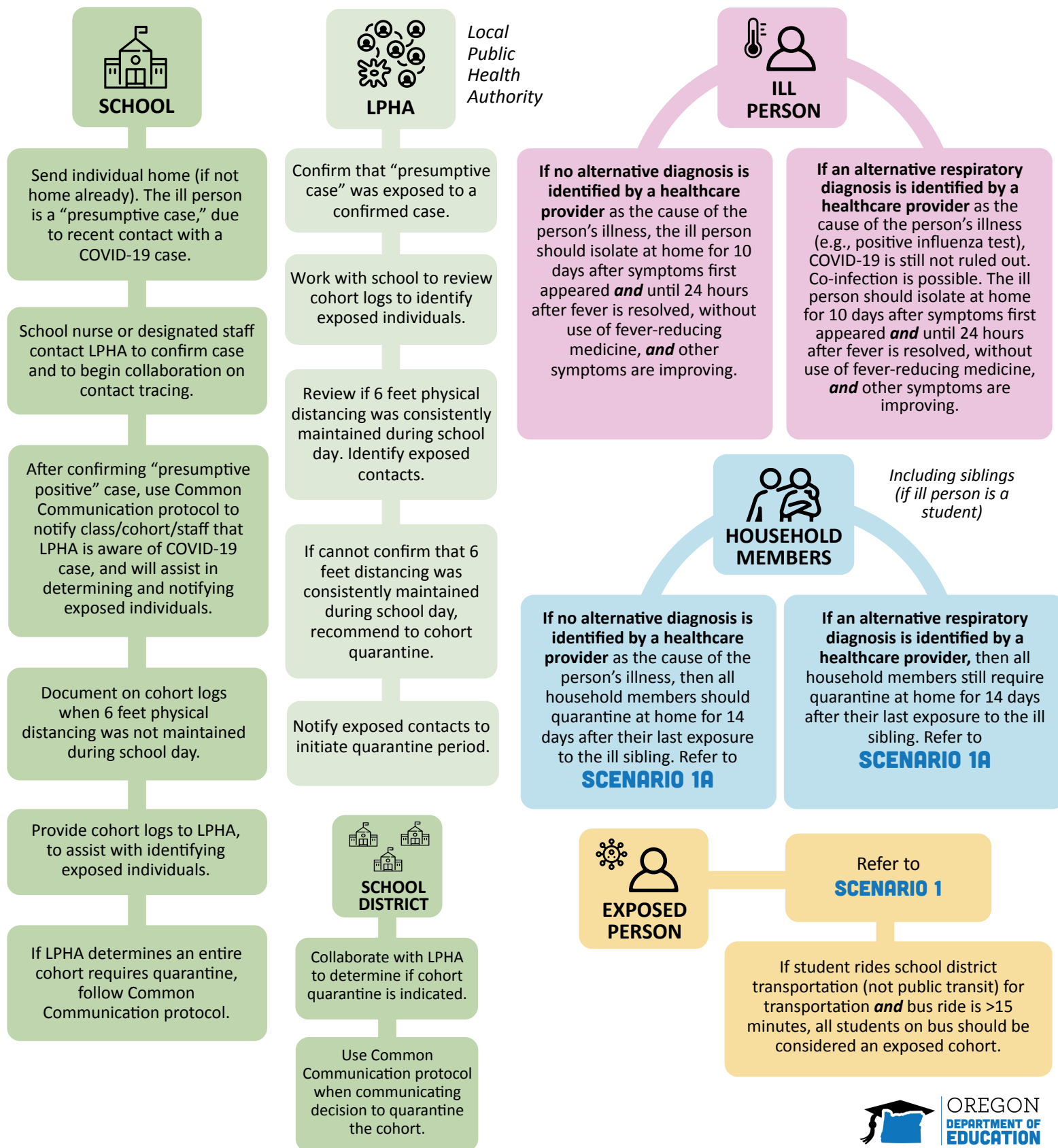
**SCENARIO 4A. AN ILL STUDENT OR STAFF MEMBER DOES NOT GET TESTED WITH A COVID-19 VIRAL TEST. ILL PERSON HAS NO KNOWN COVID-19 CONTACTS IN PAST 14 DAYS.**



# 4B. SCHOOL SCENARIOS

## HOW TO HANDLE WHEN A PERSON DOES NOT GET TESTED

**SCENARIO 4B. AN ILL STUDENT OR STAFF MEMBER DOES NOT GET TESTED WITH A COVID-19 VIRAL TEST, AND A CLEAR ALTERNATIVE NON-RESPIRATORY DIAGNOSIS IS NOT IDENTIFIED. ILL PERSON WAS IN CLOSE CONTACT WITH SOMEONE WHO HAD COVID-19 IN PAST 14 DAYS.**



# 4C. SCHOOL SCENARIOS

## HOW TO HANDLE WHEN A PERSON DOES NOT GET TESTED

**SCENARIO 4C. AN ILL STUDENT OR STAFF MEMBER DOES NOT GET TESTED WITH A COVID-19 VIRAL TEST, AND A CLEAR NON-RESPIRATORY DIAGNOSIS IS IDENTIFIED AS CAUSE OF ILLNESS. ILL PERSON WAS IN CLOSE CONTACT WITH SOMEONE WHO HAD COVID-19 IN PAST 14 DAYS.**



### SCHOOL

Send individual home (if not home already). The ill person is not considered a “presumptive case,” due to alternative diagnosis.



### ILL PERSON

If a clear alternative non-respiratory diagnosis is identified by a healthcare provider as the cause of the person’s illness (e.g., a positive urine culture in a febrile child), then usual disease-specific return-to-school guidance should be followed. However, this student also requires quarantine, due to recent exposure to COVID-19 case. Person must quarantine at home for *14 days after date of last exposure* to the COVID-19 positive contact (refer to **SCENARIO 1**), *and* meet usual return-to-school guidance for diagnosis.

If person develops new COVID-19 symptoms during quarantine, refer to **SCENARIO 2B**.



### HOUSEHOLD MEMBERS

*Including siblings (if ill person is a student)*

If a clear alternative non-respiratory diagnosis is identified by a healthcare provider as the cause of the person’s illness (e.g., a positive urine culture in a febrile child), then all household members may continue school attendance, as long as the family member develops no COVID-19 symptoms during quarantine.



OREGON  
DEPARTMENT OF  
EDUCATION

*Oregon achieves... together!*



# 5. SCHOOL SCENARIOS

## HOW TO HANDLE A POSITIVE COVID-19 VIRAL TEST

### SCENARIO 5. ONE STUDENT OR STAFF MEMBER HAS A POSITIVE COVID-19 VIRAL TEST



Send student/staff home, if not already isolated.

School nurse or designated staff contact LPHA to confirm case and to begin collaboration on contact tracing.

After confirming positive case, use Common Communication protocol to notify class/cohort/staff that LPHA is aware of COVID-19 case, and will assist in determining and notifying exposed individuals.

Document on cohort logs when 6 feet physical distancing was not maintained during school day.

Provide cohort logs to LPHA, to assist with identifying exposed individuals.

If LPHA determines an entire cohort requires quarantine, follow Common Communication protocol.



Local  
Public  
Health  
Authority

Work with school to review cohort logs to identify exposed individuals.

Review if 6 feet physical distancing was consistently maintained during school day. Identify exposed contacts.

If cannot confirm that 6 feet distancing was consistently maintained during school day, consider cohort quarantine.

Notify exposed contacts to initiate quarantine period.



Isolate at home for 10 days **and** until 24 hours after fever is resolved, without use of fever-reducing medicine, **and** other symptoms are improving.

A negative viral COVID-19 test is **not** needed for return to school.



Collaborate with LPHA to determine if cohort quarantine is indicated.

Use Common Communication protocol when communicating decision to quarantine the cohort.



Refer to **SCENARIO 1**

If student rides school district transportation (not public transit) for transportation **and** bus ride is >15 minutes, all students on bus should be considered an exposed cohort.

*Including siblings  
(if ill person is a student)*



All healthy siblings must quarantine at home. Refer to **SCENARIO 1A**



# 6. SCHOOL SCENARIOS

## HOW TO HANDLE MULTIPLE POSITIVE COVID-19 VIRAL TESTS

### SCENARIO 6. TWO OR MORE PEOPLE WITHIN SAME COHORT HAVE A POSITIVE COVID-19 VIRAL TEST WITHIN 14 DAYS



Send student/staff home, if not already isolated.

School nurse or designated staff contact LPHA to confirm case and to begin collaboration on contact tracing.

After confirming positive cases with LPHA, use Common Communication protocol to notify class/cohort/staff that LPHA is aware of COVID-19 case, and will assist in determining and notifying exposed individuals.

Document on cohort logs when 6 feet physical distancing was not maintained during school day.

Provide cohort logs to LPHA, to assist with identifying exposed individuals.

If LPHA determines an entire cohort requires quarantine, follow Common Communication protocol.



Local  
Public  
Health  
Authority

Work with school to review cohort logs to identify exposed individuals.

Review if 6 feet physical distancing was consistently maintained during school day. Identify exposed contacts.

If cannot confirm that 6 feet distancing was consistently maintained during school day, consider cohort quarantine.

Notify exposed contacts to initiate quarantine period.



Isolate at home for 10 days **and** until 24 hours after fever is resolved, without use of fever-reducing medicine, **and** other symptoms are improving.

A negative viral COVID-19 test is **not** needed for return to school.



Refer to **SCENARIO 1**

If student rides school district transportation (not public transit) for transportation **and** bus ride is >15 minutes, all students on bus should be considered an exposed cohort.

*Including siblings  
(if ill person is a student)*



Collaborate with LPHA to determine if cohort quarantine is indicated.

Use Common Communication protocol when communicating decision to quarantine the cohort.



All healthy siblings must quarantine at home. Refer to **SCENARIO 1A**



**OREGON**  
**DEPARTMENT OF**  
**EDUCATION**  
*Oregon achieves... together!*

# 7. SCHOOL SCENARIOS

## HOW TO HANDLE MULTIPLE POSITIVE COVID-19 VIRAL TESTS

### SCENARIO 7. TWO OR MORE PEOPLE WITHIN DIFFERENT COHORTS HAVE A POSITIVE COVID-19 VIRAL TEST WITHIN 14 DAYS

